



# Olympic



Olympic Group Corporation

# Only One



Olympic's individuality stems from its pursuit of customer satisfaction.

Basic philosophy : Sell in good faith

Basic policies:

- \* Provide products with freshness, quality and value that satisfy customers
- \* Strive to be a corporate group trusted by suppliers , local communities and employees

Today, Japanese consumer's market is already saturated and customers demands are constantly changing and diversified. Now retail industry is amid so called "a survival game". We believe that we must adapt to this circumstances to create and establish our own identity in the market and become a winner.

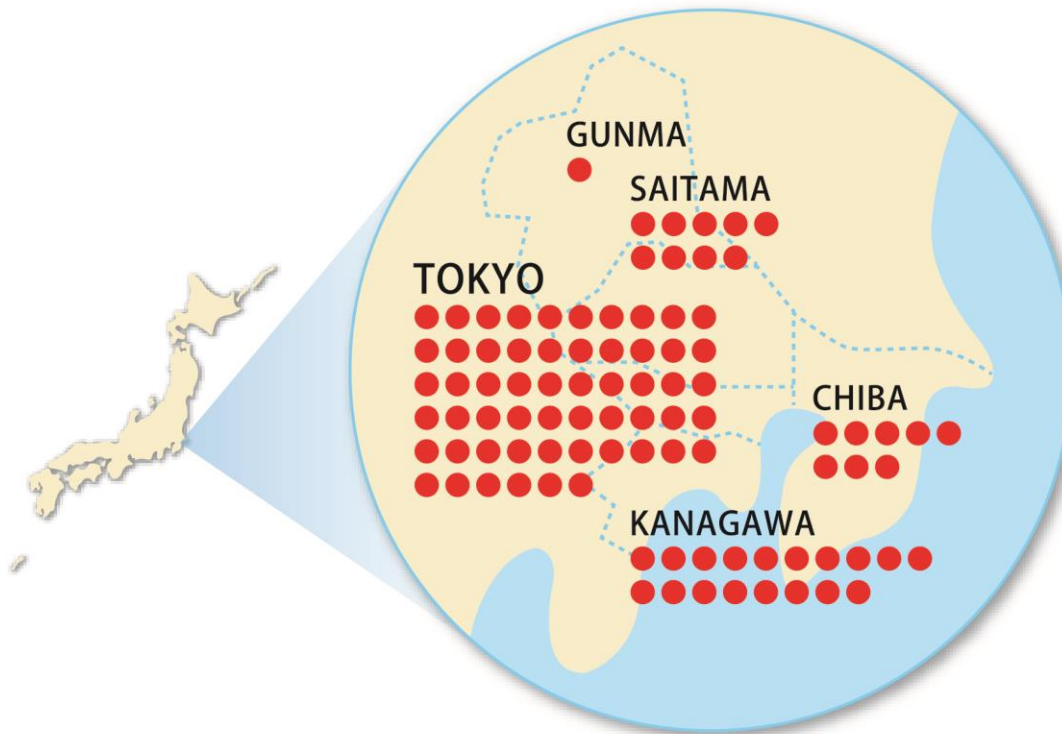
So we are constantly moving with the coherent theme which is pursuing the customer satisfaction and providing better goods with reasonable price all the time.

# Corporate History

- 1962 founded and opened the 1st store at Tachikawa, Tokyo.
- 1973 established Olympic Shopping Center Co.,
- 1988 renamed to Olympic Co., LTD.
- 1988 went public
- 1990 started the Hyper Market business model.
- 1996 was listed on the 2nd section of Tokyo Stock Exchange.
- 1999 opened the first full-scale shopping center, “Olympic City Show-Nan” (renamed to “OSC Show-Nan City”)
- 2001 was switched into the 1st section of Tokyo Stock Exchange  
acquired 100% shares of Score Co., LTD.; computer system subsidiary  
Established O.S.C. Foods Co., LTD.; subsidiary of delicatessen
- 2005 established subsidiary, OSC Golf World  
acquired 100% shares of M.K. Cars Co., LTD.
- 2006 Olympic became the holding company and split to Food Market Olympic Co., LTD.  
and Hyper Market Olympic Co., LTD.
- 2010 Hyper Market Olympic Co., LTD. absorbed and consolidated Homepic Co., LTD.
- 2013 The holding company renamed to Olympic Group corporation.  
Food Market Olympic merged with Hyper Market Olympic and renamed Olympic Co., LTD.
- 2014 Olympic split to Olympic and 4 specialty companies named Cycle Olympic, Your Petia, Shoes Forest,  
And Ouchi DEPO
- 2019 acquired 100% shares of GOUT Co.,LTD.

# Number of Stores

: Tokyo & 4 prefectures around



 **Olympic** 68 stores

Specialty stores 28 stores

# Consolidated Corporate Data

Olympic Group Co.	FY2017	FY2018	FY2019	Millions of Japanese Yen
Total revenues	100,327	96,851	93,983	
Operating income	243	562	673	
Net income	(142)	294	336	

Other consolidated subsidiaries are:

Cycle Olympic Corporation

OSC Cycle Corporation

Your Petia Corporation

Ouchi DEPO Corporation

Shoes Forest Corporation

OSC Golf World Corporation

MK Cars Corporation

K Mart Corporation

Avance Corporation

OSC Foods Corporation

Kirara Corporation

FOLME Corporation

Score Corporation

Animal General Medical Center Corporation

Arahari Sangyo Co.,LTD

GOUT Co.,LTD



# Our stores



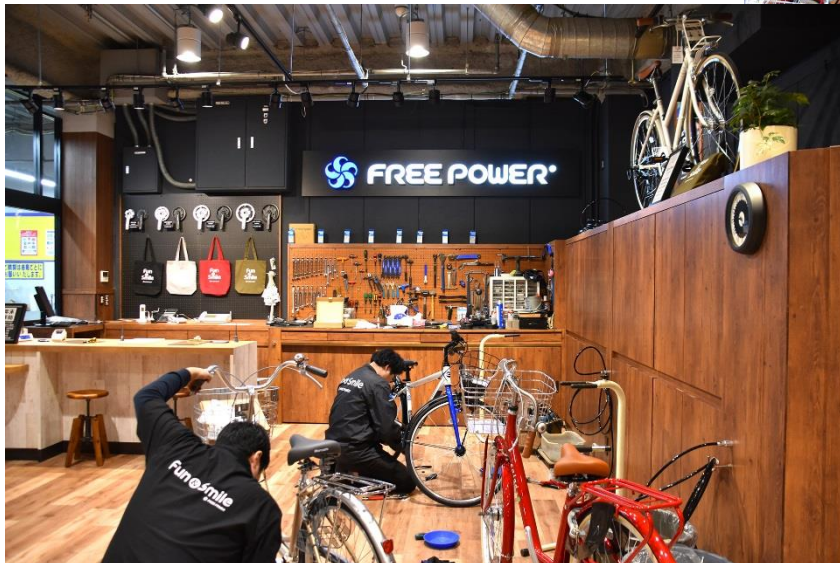


# Our stores





# Cycle stores





*Your Petia* 🐾

# Pet Specialty Store



Sales floor

Grooming Facility



*Your Petia* 🐾

# Pet Specialty Store



Golden and tropical fish

Small animals and Birds





*Your Petia* 🐾

# Pet Specialty Store



Dog Dry Food

Cat Litter (Palletize display)





# Animal General Medical Center Co.,LTD.

